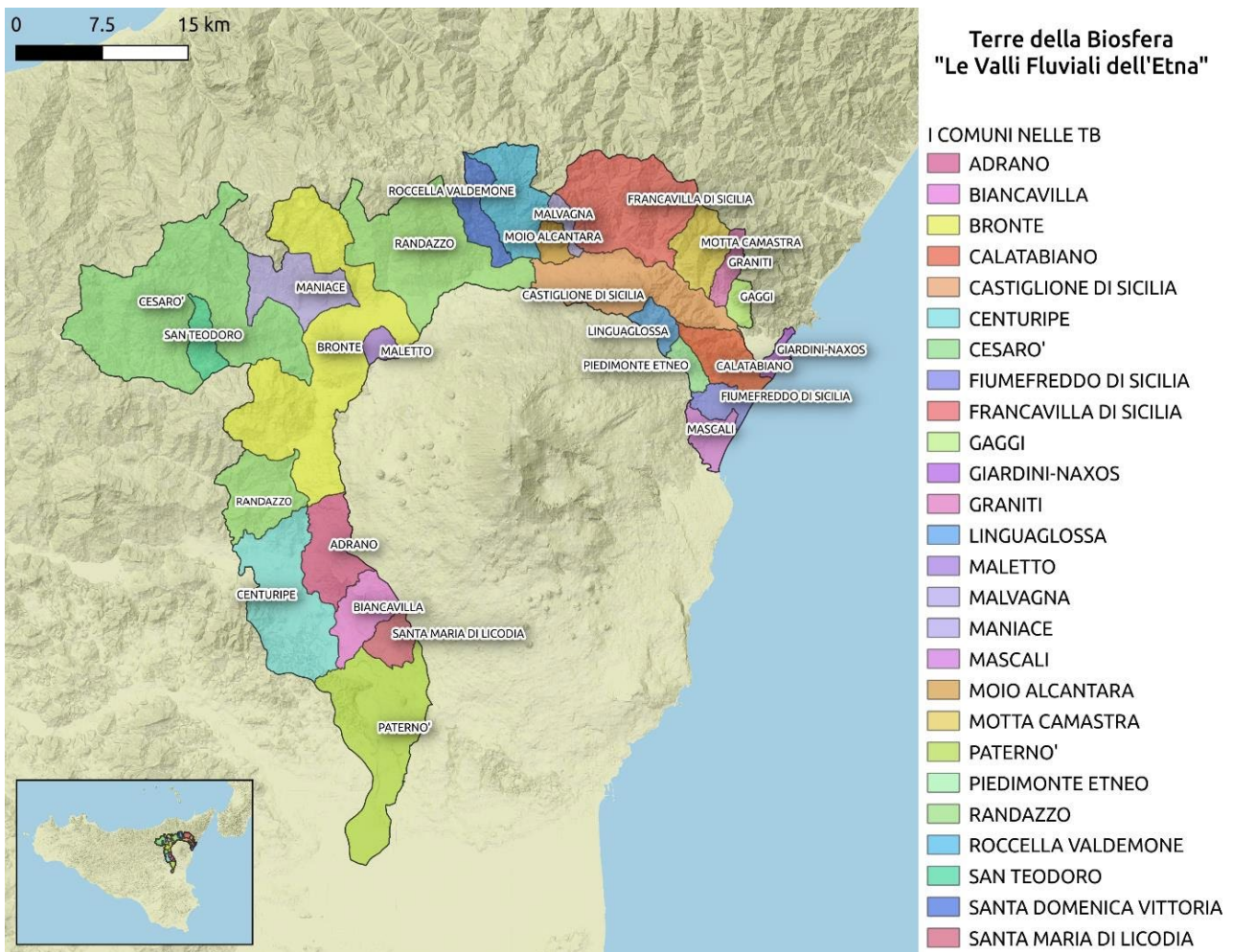


**Citizen survey on the use and perception of the agricultural landscape in the area "Terre della Biosfera"(TB),  
the subject of study in the "Farming in Sicily's Lands of Biosphere" project**

Area delle Terre della Biosfera – Le Valli Fluviali dell’Etna



**1) Favorite place: where do you most enjoy staying in the TB area\*?**

*\*Instructions of the interviewer: show the map if necessary.*

**2) Landscape use:** For which of the following activities do you frequent the TB area in your free time? Please also answer with often-every now and then-rarely-not at all.

- a. to relax and enjoy (often-every now and then-rarely-not at all)
- b. for sports activities (often-every now and then-rarely-not at all)
- c. as a meeting place (often-occasionally-rarely-not at all)
- d. to observe animals and nature (frequently - occasionally - rarely - not at all)
- e. to go to the second house on weekends / to tend the garden or vegetable garden (frequently - occasionally - rarely - not at all)

f. for other activities, i.e.? (frequently - occasionally - rarely - not at all

---

3) Now let's talk about the agricultural areas in the TB area: do you frequent them for the activities just mentioned?

- yes/ no;

- if yes, in which place \_\_\_\_\_

---

4) [If you do not enjoy the surrounding landscapes]: Why do you not frequent the TB landscape area? (open question)

---

---

---

5) I will now read you some characteristics of the landscapes in the TB area. Please rate how satisfied you are with these features. Please use a scale of 1 to 5, where 1 stands for very dissatisfied and 5 for very satisfied. Please also rate how this characteristic has changed over the past ten years.

*Rating (1 2 3 4 5)*

*Change (worsening, no change, improvement)*

- Presence of field paths
- Presence of hedges, tree rows, ditches and other structural elements
- Presence of wildflowers and flower strips
- Presence of insects (e.g., bees and butterflies)
- Presence of birds and other wildlife
- Presence of cultural property, monuments, historic buildings
- Existence of jobs related to nature and landscape
- Large-scale cultivation of a single plant species
- Use of fertilizers and herbicides
- Presence of wind energy and biogas plants

6) Now let's talk about your personal attitudes independent of the landscapes in the TB area: Please rate the extent to which you personally agree with the following statements.

*1 - disagree at all, 2 - rather disagree, 3 - neutral, 4 - rather agree, 5 - completely agree.*

- When making decisions, agriculture takes into account the impact of its actions on nature, such as for the conservation of clean soils and groundwater. 1 2 3 4 5
- Agricultural activities take into account the maintenance of the cultural landscape. 1 2 3 4 5
- Organic farming is expanding. 1 2 3 4 5
- Where possible, food is grown, processed and consumed within a region. 1 2 3 4 5
- Agricultural production is geared to the wants and needs of consumers. 1 2 3 4 5

7) You now have the opportunity to tell us your wishes for the future development of the rural area around the TB area. Cosa è importante per te?

---

---

---

8) We are almost done. Before we get to the end of the survey, I have a few brief questions for you about personal characteristics. Before we do that, I would like to remind you again that all of your information will be evaluated completely anonymously.

Gender [\_\_\_\_\_]: male / female / n/a How old are you? \_\_\_\_\_

Do you have minor children? [yes/no]

What level of education have you achieved? [if it is not clear write "nr"] \_\_\_\_\_

Translated from Italian by Laura Serra, February 2023